

LOYOLA UNIVERSITY CHICAGO

The Office of Institutional Effectiveness (OIE)

An Introduction

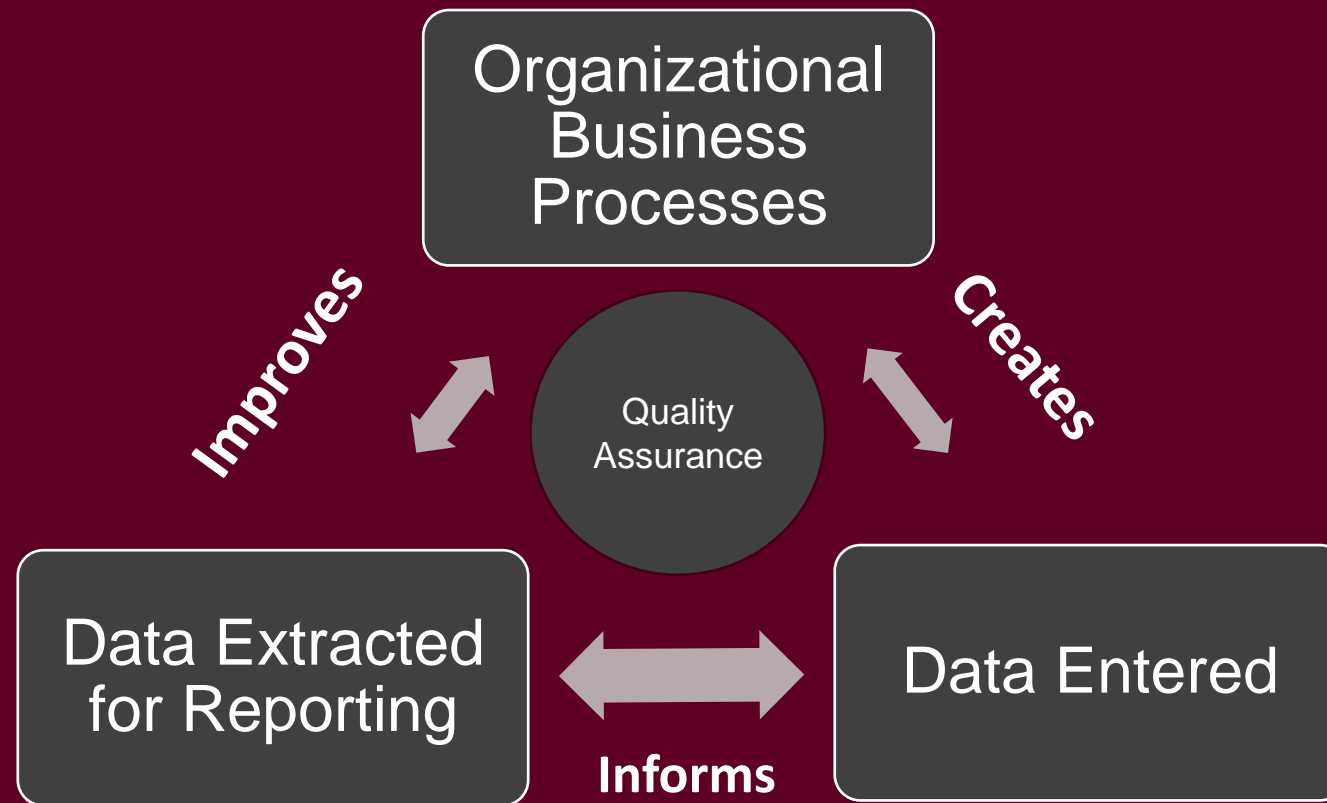
Catherine Robert, EdD, Interim Associate Provost, OIE and Sr. Director of IR

AUGUST 29, 2024



LOYOLA
UNIVERSITY CHICAGO

The Role of Institutional Effectiveness (OIE)



MISSION

Our charge in the Loyola University Chicago Office of Institutional Effectiveness (OIE) is to embody Loyola's Jesuit Catholic values.

We guide leaders to reflect on information and analysis to optimize institutional effectiveness and advance Loyola's mission and values.

We empower university leaders to ethically engage in evidence-informed decision-making that is grounded in sound data governance.

VISION

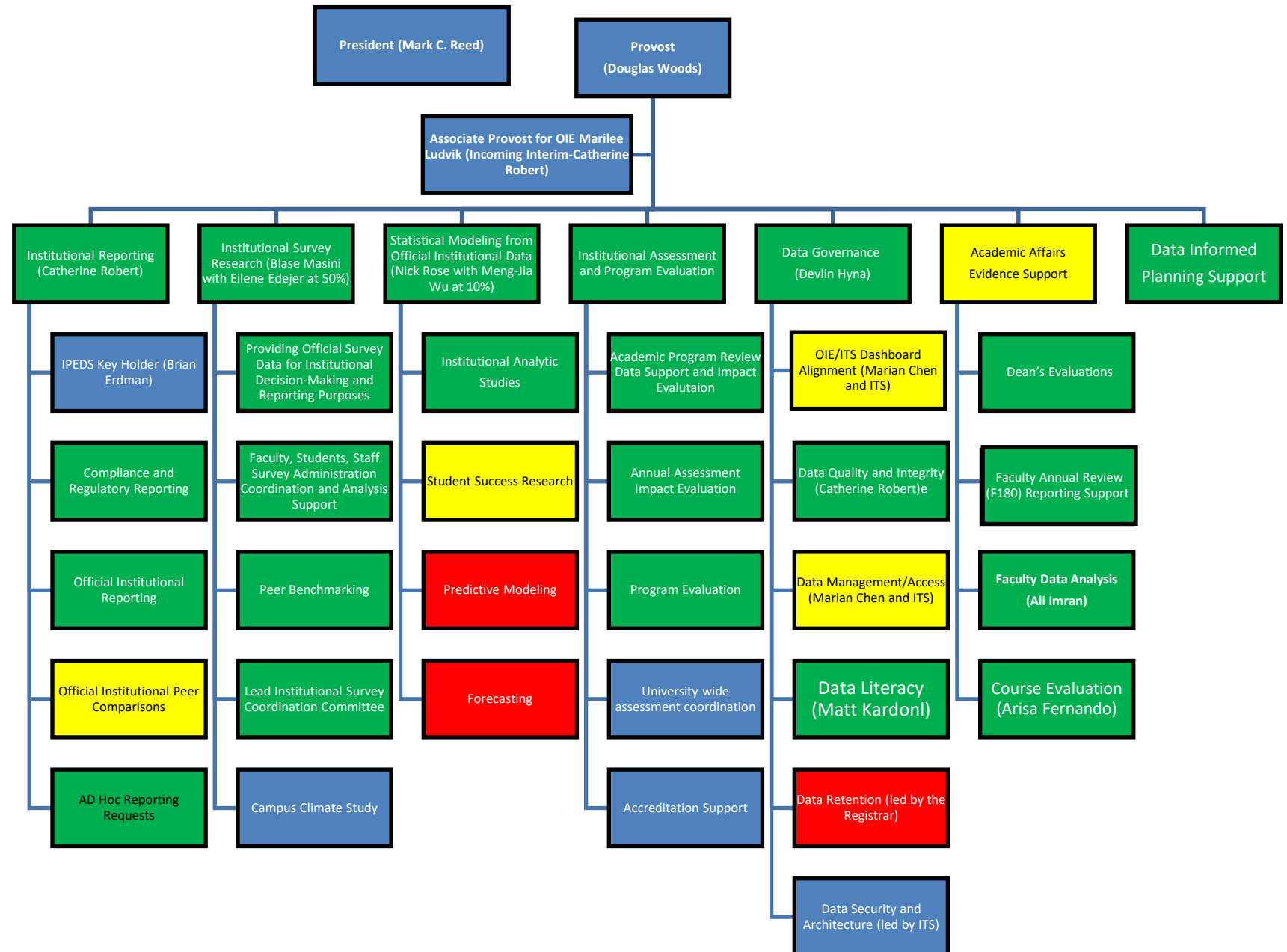
Our vision at the Loyola University Chicago Office of Institutional Effectiveness (OIE) is a culture of evidence-informed decision-making which aligns with our Jesuit Catholic values to improve our institutional capacity, quality, and stewardship.

PURPOSE

Rooted in the Jesuit values and mission of the University,
the Loyola University Chicago Office of Institutional Effectiveness (OIE)

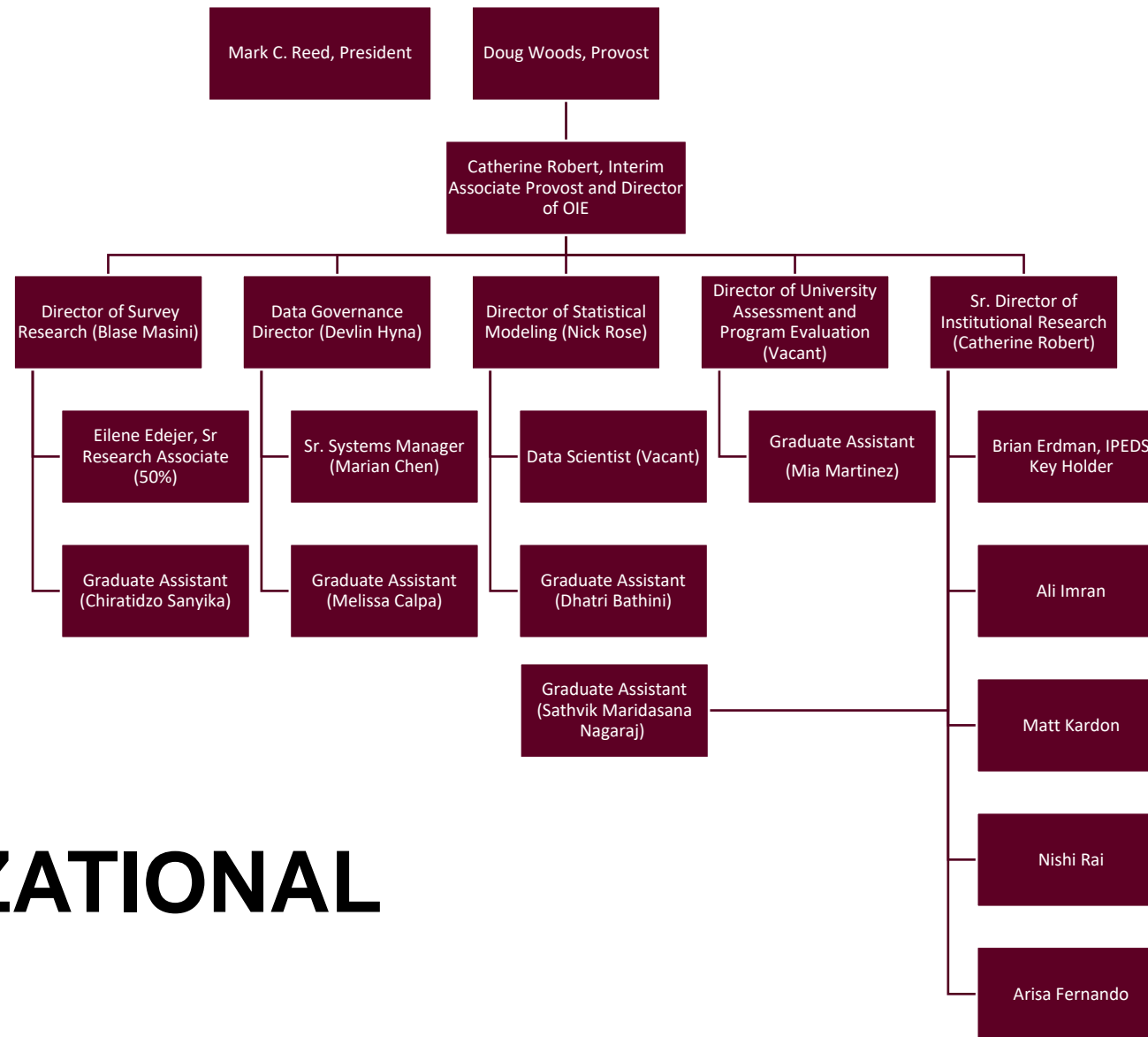
- Provide leadership as a trusted partner working with ITS and other campus partners, to implement all aspects of data governance for officially reported institutional data.
- Engage the LUC community in discernment and dialogue examining how business processes influence data collected so that the reporting out of that data informs responsible improvements in institutional business practices and student learning.
- Advance continuous improvement by advocating for responsible and improved use of how data is used in institutional decision-making processes.
- Ensure that all of this is done in a timely manner, to the highest level of quality, and in alignment with Loyola's mission, values, and strategic objectives.

OIE FUNCTIONAL AREAS

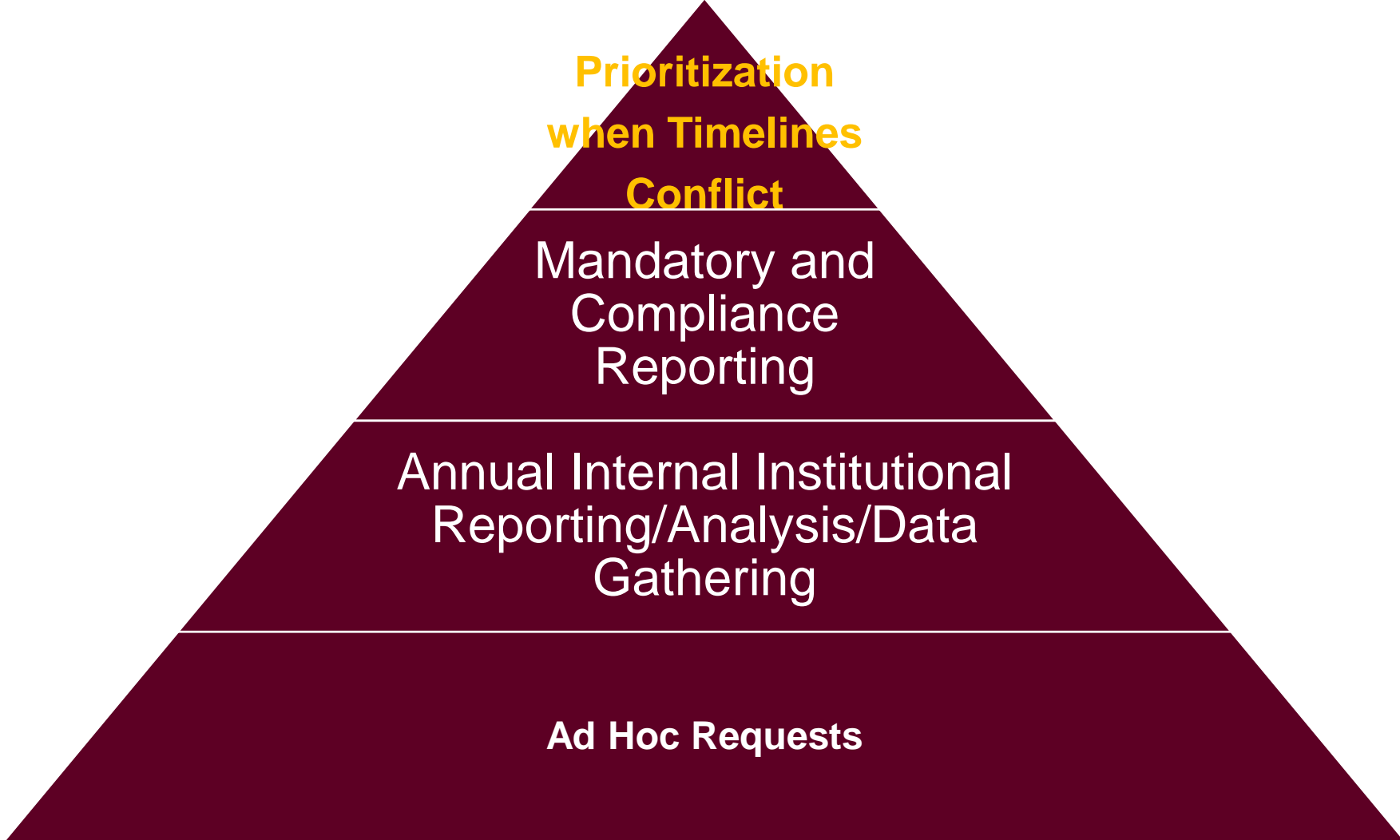


Legend:
 Blue = Context
 Green = Established and Moving Forward On Schedule
 Yellow = In Progress
 Red = Not Yet Begun

OIE ORGANIZATIONAL CHART



OIE PROJECT PRIORITIZATION



Examples of Data Collection at LUC

I=INPUTS

Admissions Funnel Data &
Yield Analysis

Enrollment Data

FAFSA Application Data

Slate Intent to Enroll Survey

Orientation Registration Survey

Faculty/Staff Applicant Data

E=EXPERIENCE

Persistence Analysis

GPA

Enrollment Datasets

NSSE Engagement Survey

Academic Program Review

Salary Equity Analysis

Faculty Research, Teaching,
& Service Productivity

Campus Climate Survey

O=OUTPUTS

Graduation Rates

Time to Degree

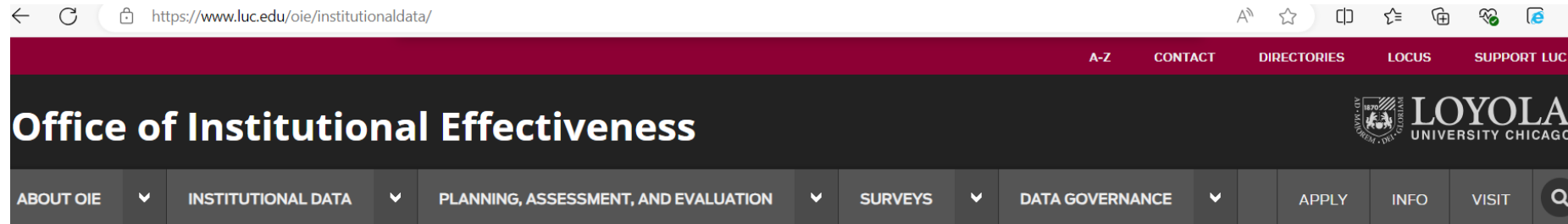
Licensure Pass Rates

Peer Comparison Data

First Destination Data

Alumni Surveys

DATA RESOURCES



/ OFFICE OF INSTITUTIONAL EFFECTIVENESS (OIE) / INSTITUTIONAL DATA

Institutional Data

- [Annual Diversity Reports](#)
- [LUC Fact Book](#)
- [Peer Group Comparisons](#)
- [Student Achievement](#)
- [Common Data Set](#)
- [Enrollment Statistics](#)
- [Living Our Mission](#)

LUC FACT BOOK
LIVING OUR MISSION
STUDENT ACHIEVEMENT
ENROLLMENT STATISTICS
PEER GROUP COMPARISONS
COMMON DATA SET
ANNUAL DIVERSITY REPORTS

Use of data for institutional research cannot be restricted to one office...the new role for institutional research is in coaching a wide array of data consumers, managing institution-wide data and analytical requirements, and orchestrating “the economics of institutional research” in balancing information supply and demand.

—Association for Institutional Research

QUESTIONS TO CONSIDER

What data will I need for my work?

Do I know where to find that data at LUC?

Who can I call upon for help finding data, developing an assessment, or engaging in institutional analytic studies?

Thank you

<https://www.luc.edu/oie/>



LOYOLA
UNIVERSITY CHICAGO